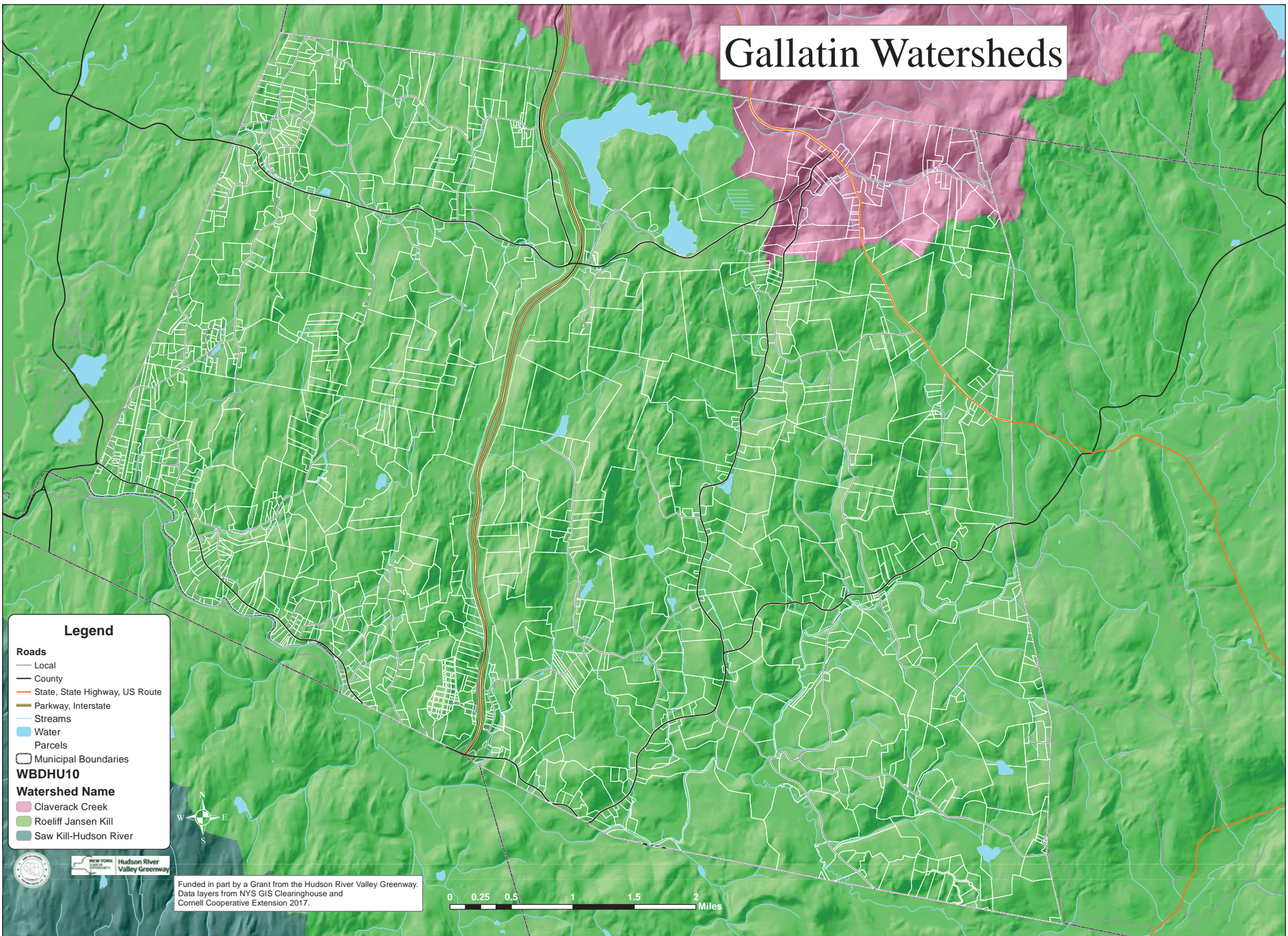


Gallatin Watersheds



Legend

Roads



- Local
- County
- State, State Highway, US Route
- Parkway, Interstate
- Streams
- Water
- Parcels

Municipal Boundaries

WBDHU10

Watershed Name

- Claverack Creek
- Roeliff Jansen Kill
- Saw Kill-Hudson River

Funded in part by a Grant from the Hudson River Valley Greenway.
Data layers from NYS GIS Clearinghouse and
Cornell Cooperative Extension 2017.

