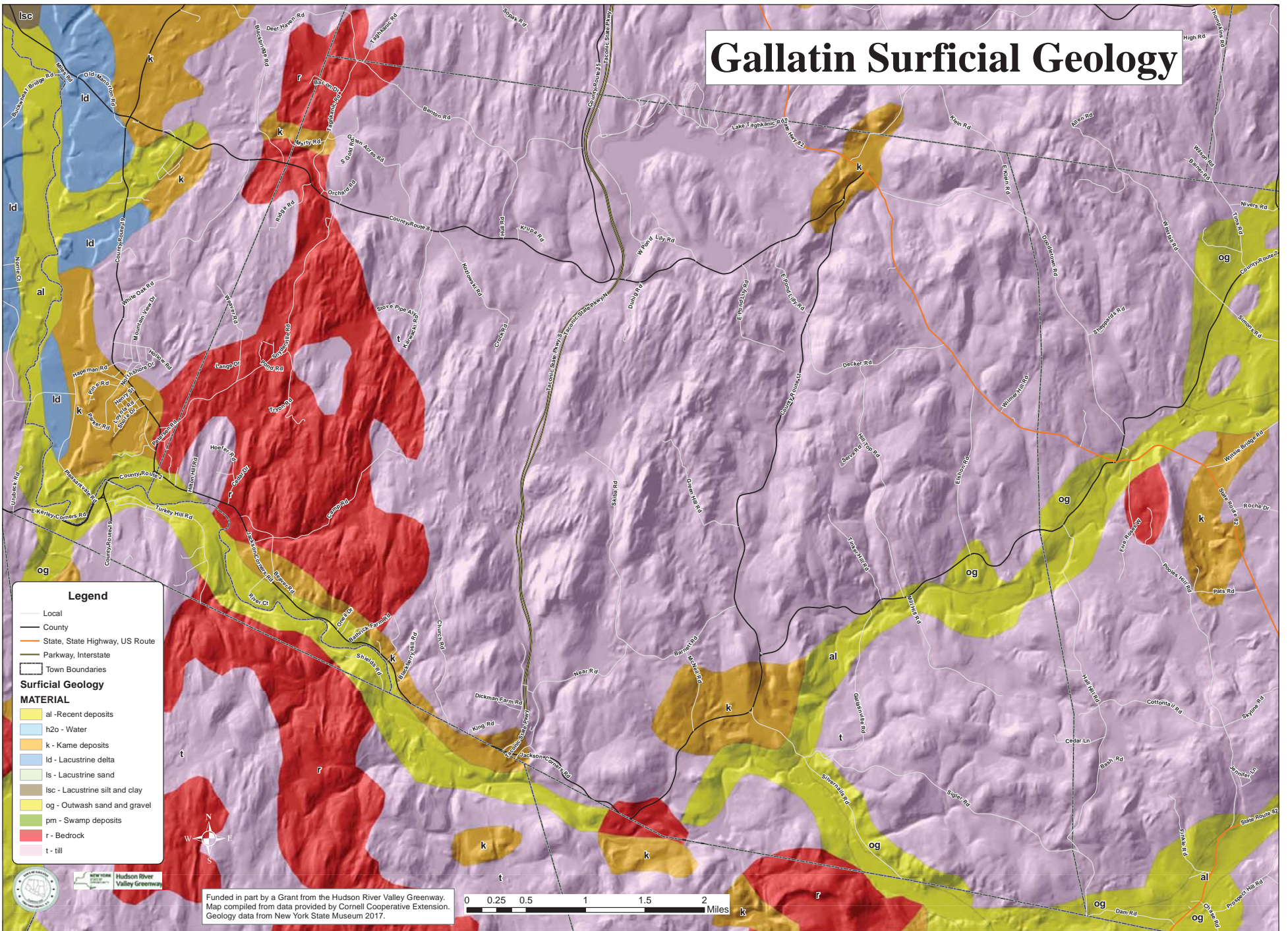


Gallatin Surficial Geology



Legend

- Local
- County
- State, State Highway, US Route
- Parkway, Interstate
- Town Boundaries

Surficial Geology

MATERIAL

- al - Recent deposits
- h2o - Water
- k - Kame deposits
- ld - Lacustrine delta
- ls - Lacustrine sand
- lsc - Lacustrine silt and clay
- og - Outwash sand and gravel
- pm - Swamp deposits
- r - Bedrock
- t - till

Funded in part by a Grant from the Hudson River Valley Greenway.
 Map compiled from data provided by Cornell Cooperative Extension.
 Geology data from New York State Museum 2017.

