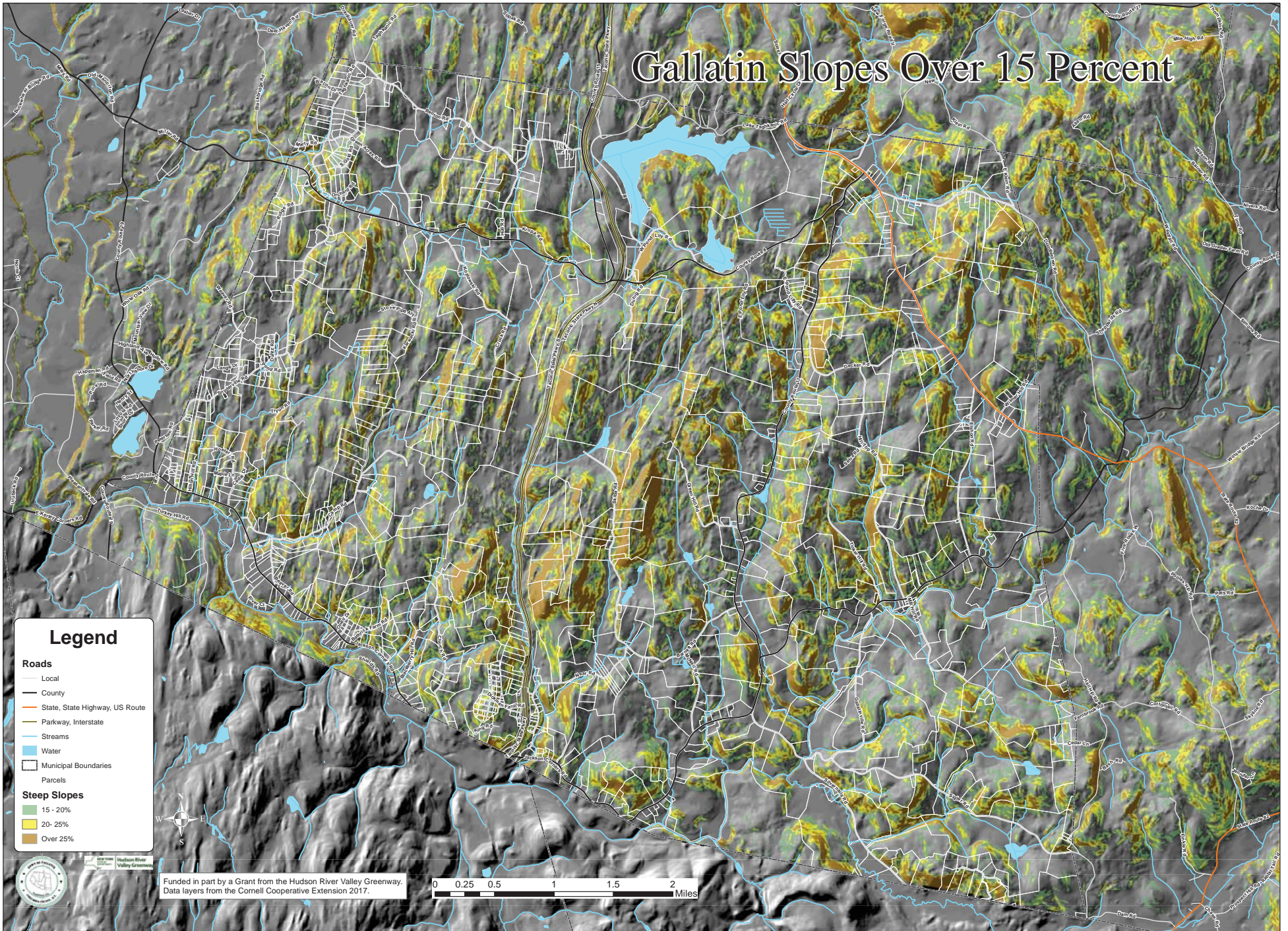


Gallatin Slopes Over 15 Percent



Legend

Roads

- Local
- County
- State, State Highway, US Route
- Parkway, Interstate
- Streams
- Water
- Municipal Boundaries
- Parcels

Steep Slopes

- 15 - 20%
- 20 - 25%
- Over 25%



Funded in part by a Grant from the Hudson River Valley Greenway.
Data layers from the Cornell Cooperative Extension 2017.

