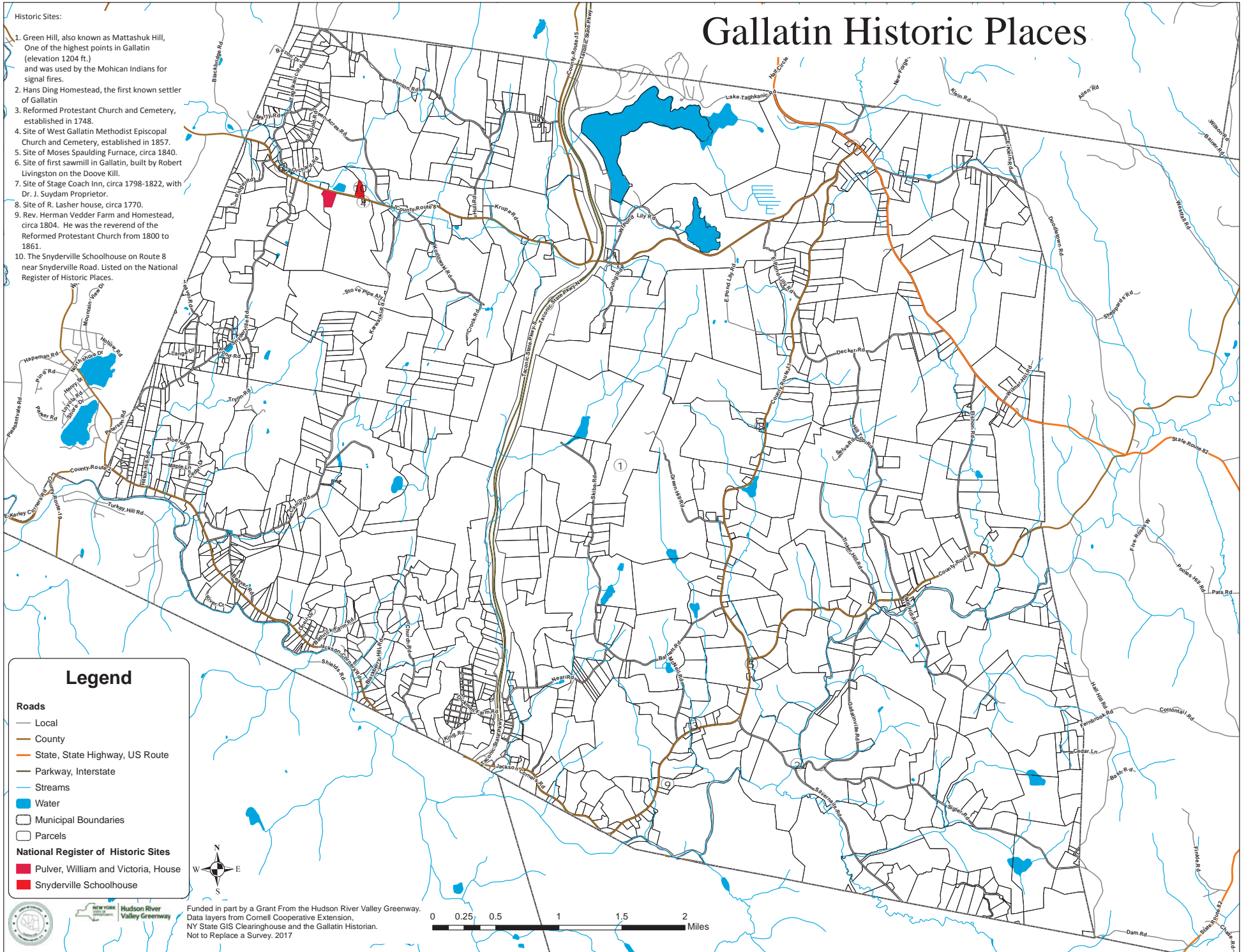


Gallatin Historic Places

Historic Sites:

1. Green Hill, also known as Mattashuk Hill, One of the highest points in Gallatin (elevation 1204 ft.) and was used by the Mohican Indians for signal fires.
2. Hans Ding Homestead, the first known settler of Gallatin
3. Reformed Protestant Church and Cemetery, established in 1748.
4. Site of West Gallatin Methodist Episcopal Church and Cemetery, established in 1857.
5. Site of Moses Spaulding Furnace, circa 1840.
6. Site of first sawmill in Gallatin, built by Robert Livingston on the Doove Kill.
7. Site of Stage Coach Inn, circa 1798-1822, with Dr. J. Suydam Proprietor.
8. Site of R. Lasher house, circa 1770.
9. Rev. Herman Vedder Farm and Homestead, circa 1804. He was the reverend of the Reformed Protestant Church from 1800 to 1861.
10. The Snyderville Schoolhouse on Route 8 near Snyderville Road. Listed on the National Register of Historic Places.



Legend

Roads

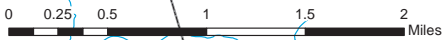
- Local
- County
- State, State Highway, US Route
- Parkway, Interstate
- Streams

Water

- Municipal Boundaries
- Parcels

National Register of Historic Sites

- Pulver, William and Victoria, House
- Snyderville Schoolhouse



Funded in part by a Grant From the Hudson River Valley Greenway.
 Data layers from Cornell Cooperative Extension,
 NY State GIS Clearinghouse and the Gallatin Historian.
 Not to Replace a Survey. 2017