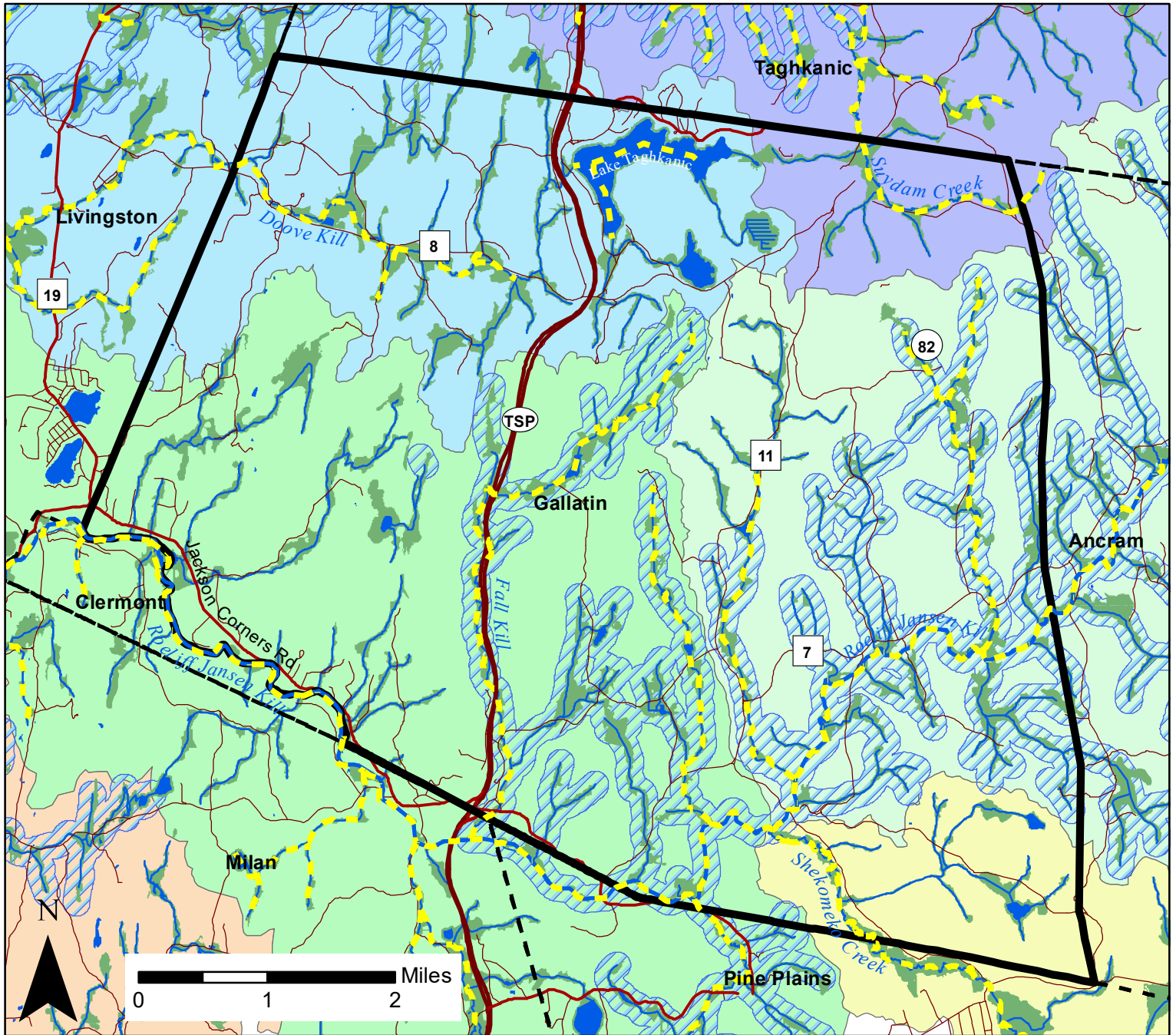


Figure 3: Streams and Watersheds in Gallatin, NY



Legend

- - - Trout or Trout-Spawning Stream
- Important Coldwater Stream Habitat
- Riparian Area
- Road
- Major Road/Highway
- Stream
- Waterbody

Watersheds

- Punch Brook-Roeliff Jansen Kill
- Fall Kill-Roeliff Jansen Kill
- Shekomeko Creek (Roeliff Jansen Kill tributary)
- Doove Kill-Klein Kill-Roeliff Jansen Kill
- Suydam Creek-Taghkanic Creek-Claverack Creek

This map was produced as part of a habitat summary for the Town of Gallatin, NY. For more information, contact DEC Hudson River Estuary Program Conservation and Land Use Specialist Ingrid Haeckel at ingrid.haeckel@dec.ny.gov.

Data Sources:

NY Natural Heritage Program: riparian areas and coldwater habitats (2018); DEC: trout streams (2019); USGS: HUC12 watersheds (2009); NYSITS: railroads and municipal boundaries (2018); ESRI: roads (2018). Map created 2021



Hudson River Estuary Program



Cornell University