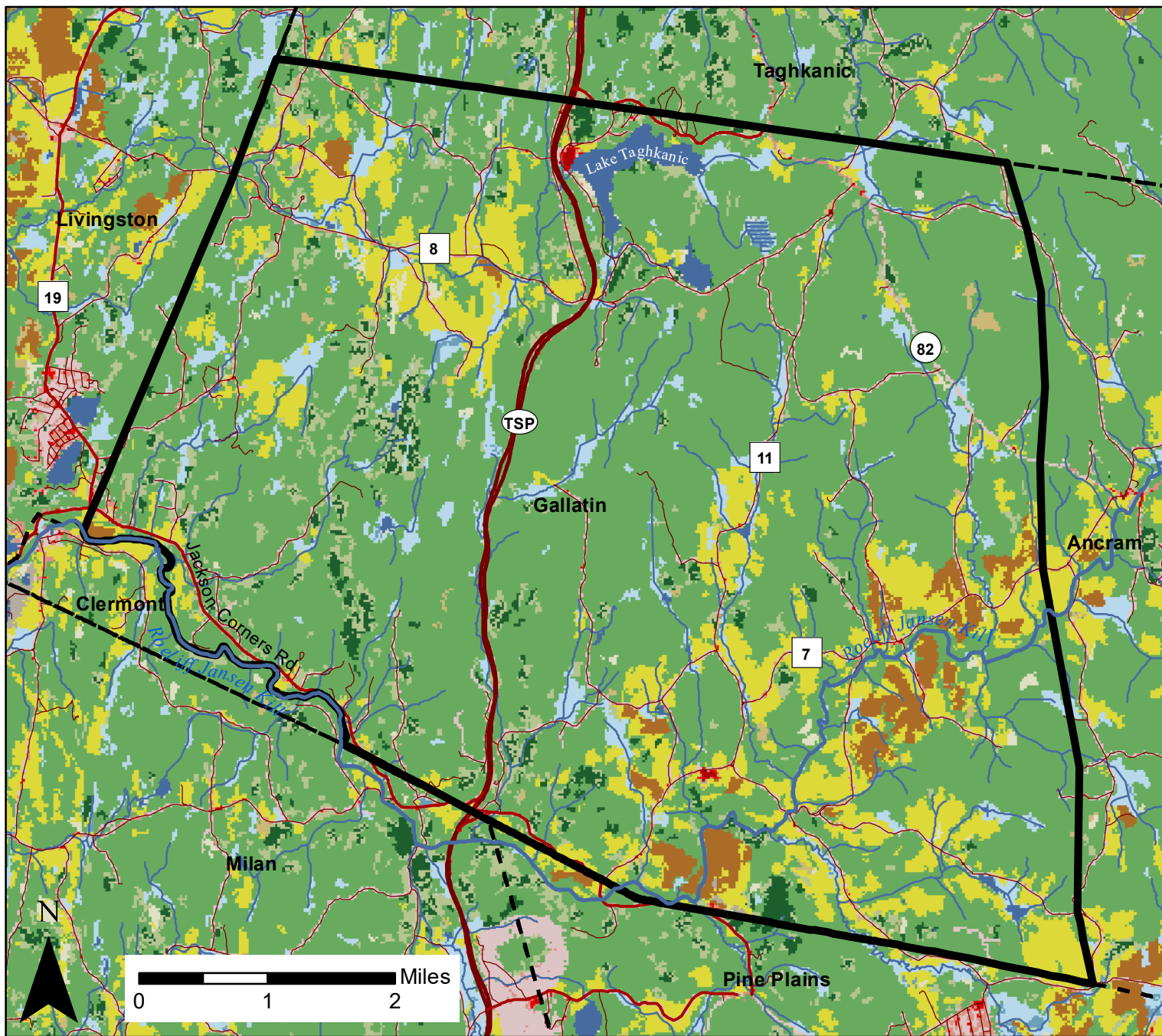


Figure 1: Land Use and Land Cover in Gallatin, NY



Legend

- Road
- Major Road/Highway
- Stream

Land Use and Land Cover

- | | |
|---|---|
| ■ Developed - High Intensity | ■ Cultivated Crops |
| ■ Developed - Medium Intensity | ■ Hay/Pasture |
| ■ Developed - Low Intensity | ■ Herbacious |
| ■ Developed - Open Space | ■ Shrub/Scrub |
| ■ Barren Land | ■ Deciduous Forest |
| ■ Emergent Herbacious Wetlands | ■ Mixed Forest |
| ■ Woody Wetlands | ■ Evergreen Forest |
| ■ Open Water | |

This map was produced as part of a habitat summary for the Town of Gallatin, NY. For more information, contact DEC Hudson River Estuary Program Conservation and Land Use Specialist Ingrid Haeckel at ingrid.haeckel@dec.ny.gov.

Data Sources:

MRLC: 2016 National Land Cover Database (2019); DEC: streams (2017); NYSITS: railroads and municipal boundaries (2018); ESRI: roads (2018). Map created 2021



Hudson River Estuary Program



Cornell University