

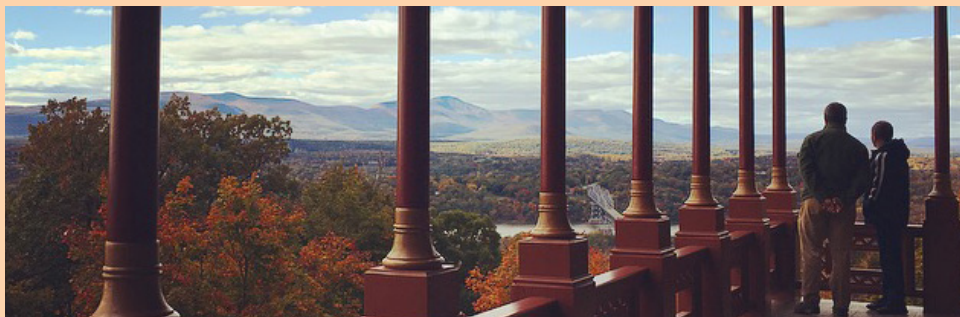
EDUCATION | Inspire Discover Create

# OLANA

Summer-Autumn  
Calendar 2016



# PLANNING YOUR VISIT



**To register for the programs in this brochure:** Visit [www.olana.org/education](http://www.olana.org/education). Walk-ins are welcome if space permits. For more information or registration assistance please call Olana's Education Department, Amy Hufnagel or Elizabeth Schanz, at 518-828-1872 ext. 105.

**Location:** All public programs take place in the **Wagon House Education Center** unless otherwise indicated; please check the website for up-to-date location information and for weather related updates. For GPS directions, please enter the address 5720 State Route 9G, Hudson, NY 12534.

**What to Pack:** For programs that happen out in the landscape we highly recommend good walking shoes, water, sunscreen, and bug repellent. For evening events, please add a flashlight.

**Olana's House + Landscape Tours:** The house tour includes the main floor and the studio, richly decorated with paintings and collections. The landscape tours through Olana's artist-designed carriage roads include a 5-mile guided electric vehicle drive, a 1-mile guided walking tour, and a self-guided downloadable app. **For information, please go to page 16.**

**Hours of Operation:** Olana's landscape and views are open from 8am to sunset all year long.

**Group tours:** Please visit [www.olana.org](http://www.olana.org) on the Book a Tour page, if you are a group of over 10 persons please fill out our Large Group House Tours Form and for youth/school group tours email Amy Hufnagel at [Ahufnagel@olana.org](mailto:Ahufnagel@olana.org)

**Membership:** Members of The Olana Partnership receive many year-round benefits including free entrance into the house and landscape, reduced rates on the enclosed programs and discounts in the Museum Store. Members must present membership card to receive discounts. You can become a member by signing up at one of our programs or by visiting [www.olana.org/support](http://www.olana.org/support)

**Cancellation policy:** The Olana Partnership does not offer refunds for programs unless we cancel the program. We are happy to work with you to offer admission to another program at a comparable price, or you may make the payment a tax-deductible donation.

**Sponsors:** Wagon House Education Center programming is made possible in part through support provided by people like you who attend our events and by public funds from the New York State Council on the Arts, a NYS agency; the Hudson River Bank & Trust Foundation; the Taconic Foundation; the John Wilmerding Education Initiative, and the members of The Olana Partnership.

**To view our programs in a calendar format, please visit [www.olana.org/calendar](http://www.olana.org/calendar)**

F R I  
**JUN 24**  
**JUL 29**  
**AUG 26**  
**SEP 23**  
**OCT 28**

## **NEW! Sunset Carriage Tours**

Olana offers couples, or groups, carriage rides on the 19th century carriage roads. A stunning carriage and draft team saunter Frederic Church's gravel roads bringing travelers to majestic views and stellar landscapes while the sun sets toward the Catskill Mountains. Meet the carriage 10 minutes before start time at the Olana Visitor Center entrance. For Olana's 50th Anniversary, we are activating this traditional travel option on the site once a month. Rain dates Saturdays. Maximum capacity: 6 persons.



**4pm-sunset, 30 minutes | Individual: \$25, Exclusive Couple: \$75 | All Ages**

S A T  
**MAY 28**  
**JUN 25**  
**JUL 23**

## **The Tasty History Series**

Make three toasts with us to celebrate 50 years of Olana! This series explores the dining & drinking customs from three pivotal years in Olana's history. NYS Curator Amanda Massie and Olana's Associate Curator Valerie Balint set the historical stage for an evening of tasty treats. Tastings include hors d'oeuvres and dessert with Chef Julie Gale and drinks from the Hudson Wine Standard. Location: Adjacent to the flower garden, in the case of rain the event will be held in the Wagon House.



**3-5pm | Member: \$20, Non-Member: \$25 | Ages 21+**

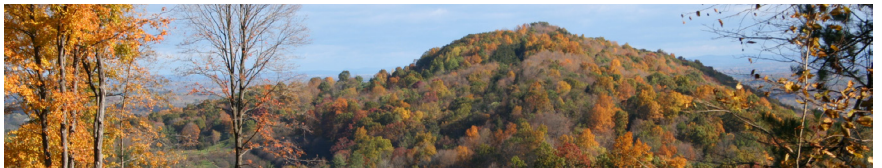
S A T  
**JUL 09**

## **The Olana Summer Party: Olana "66"**

Join The Olana Partnership for an evening of food from Hudson Valley Chefs, cocktails, and views as we flash back to 1966 and celebrate the 50th Anniversary of the saving of Olana. Enjoy delicacies with an "OLANA '66" twist as you watch the sunset behind the Catskills and move to the music of the past and future. Public welcome!

**6pm | Host Committee: \$250, Member: \$100, Non-Member: \$125 | Ages 21+**

S U N  
**OCT 02**



S A T  
**NOV 26**

## **FREE! Preserving Olana: Stories from the Field**

**October 2 - Landscape Preservation**

**November 26 - Conserving F.E. Church's Painting *Autumn***

Learn about the steps The Olana Partnership's curatorial staff and NYSOPRHP specialists have taken to protect Olana over the years. On October 2nd join a landscape tour on our carriage roads guided by the leading officials of this vital work. On November 26th join us for a lecture with Mary Betlejeski, NYSOPRHP Conservator, to view F.E. Church's newly restored masterpiece, *Autumn*.

**3-5pm | Free | Ages 10+**

# ART + CONVERSATIONS

S A T  
**AUG 20**  
SEP  
**10**  
OCT  
**08**  
OCT  
**22**

## Artful Hike: Church's Letters & 19th Century Ballads

As you stroll along the roads designed by Frederic Church, contemplate his words and the words of his family, contemporaries and songs from their era. Artist and musician Brian Dewan does a dramatic reading of significant letters in Olana's collection. This tour is between 1 hour and 1.5 hours in length and will travel no more than 1 mile. What better way to learn than through primary sources?

**3pm | Member: \$15, Non-Member: \$20 | All Ages**



© Alon Koppel

F R I  
**JUN 10**  
SEP  
**30**

## Non-Fiction Tour for Writers and Teachers

Join storyteller Tom Lee on a tour through Olana to learn how to spark your students' imaginations and how to enhance learning for K-9 Language Arts and Social Studies. Trained in Visual Thinking Strategies, with years of experience telling stories with museum collections, Tom Lee heads artsVOYAGE, the arts-in-education program at Spencertown Academy. Pre-registration is required.

**4:30pm | \$10 | Adults Only**



S A T  
**JUN 11**  
JUL  
**09**  
AUG  
**27**  
OCT  
**01**

## FREE! Museum Storytelling: Family Tours

Calling all families! This will not be a traditional house tour; instead storyteller Tom Lee engages with Olana's collection to invent stories to show how museum collections can come alive. Tom Lee works in museums all over the country including The Metropolitan Museum of Art. Space is limited; pre-registration is required.

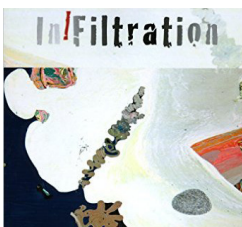
**10am | Free | Ages 5+**

S U N  
**SEP 25**

## Artful Hike: Poet's Walk

What would it be like to step into a poem? This walking poetry reading in motion hopes to answer the voluble possibilities of such a question. Guided by Sam Truitt, Director of Station Hill Press and the co-editor of *In|Filtration: An Anthology of Innovative Poetry from the Hudson River Valley*.

**3-5pm | Member: \$10, Non-Member: \$15 | Ages 10+**



F R I  
**NOV 11**

## (Art)venture: Making Dioramas

Youth will be able to spend the school holiday exploring ideas of what makes a house a home with young adult author of *My Life in a Diorama*, Tara Altebrando. Participants will replicate an existing room or invent a dream room in miniature to take home.

**9am-4pm | \$50 includes novel, diorama kit & all materials | Ages 7-14**



F R I **Miniature Theater: Marionette Production**

NOV  
25

10am - *Three Little Pigs*

11am - *Carnival of the Animals*

Olana is excited to share the holiday with you for a marionette show where classic tales with hand-crafted puppets and live music will be performed. Bring the young at heart and your house guests for theater in miniature, an ancient art form with 19th century links. RZM Troupe has performed for thousands of children from the Boston Children's Museum to the Berkshire Theatre Festival.



10am-12pm | Member: \$10, Non-Member: \$15, Family: \$30 | Ages 3+

S A T **Beeswax Candle Making**

NOV  
26

Instead of shopping for gifts - why not make one? Start a new family tradition of creating together in preparation for the holiday season. Megan Denver from Hudson Valley Bee Supply will teach us the art of making rolled and dipped beeswax candles - a learning experience for all!



10am-12pm | Member: \$15, Non-Member: \$20, Family: \$40 | Ages 5+

check online  
for activity details

**Sunday Studios- Jun 26, Jul 10, Aug 28, Sep 18, Oct 30, Nov 20, Dec 04**

These Sunday morning programs are designed for local families, heritage and art tourists, and regular visitors who like to make art. Projects take about 30 minutes and are fun for all ages. Everyone leaves with a work of art! **11am-1pm | Free | All Ages**

**Art in the Morning for Preschoolers- Last Wednesday of every month**

Programs for pre-school children and their caregivers. Come anytime within the 2 hour block, everyone leaves with a work of art! We suggest planning a self-guided hike and perhaps a picnic lunch as part of your visit to Olana.

10am-12pm | \$5, adults free | Ages 3-5

W E D **Holiday Greens**

NOV  
30  
DEC  
07

Wednesday, November 30 - **19th Century Wreath Making**

Wednesday, December 7 - **Boxwood Trees**

Mary Hughes, Olana's Master Gardener, will teach the art of creating seasonal evergreen wreaths and boxwood trees in these hands-on workshops. Please bring a pair of pruning shears. All other supplies and refreshments will be provided.

6-8pm | Member: \$30, Non-Member: \$35 | All Ages



S A T **Oil Cloth Placemats & Table Runners**

DEC  
03

Artist Barbara Jefts from Native Farm Flowers will teach the art of creating placemats and table runners using the designs and colors we find throughout the main house. The perfect craft to incorporate into your holiday table setting. Materials provided, tea and cake served.

3-5pm | Member: \$20, Non-Member: \$25 | All Ages

# TRAVEL + EXPLORE

## SAT **Skyscape Series: Blue Moon Hike**

**MAY**  
**21**

Join environmental educator Fran Martino for a night hike on the wide carriage roads. Frederic Church was famous for his paintings of sunsets, however he was an expert at painting the moon too. Join us for this night of moon light and storytelling.

**8pm | Member: \$5, Non-Member: \$10 | All Ages**

## WED **Flashmob: Firefly Hike**

**JUL**  
**13**

Discover the fascinating world of fireflies with environmental educator Fran Martino. Learn about their communication, behavior, and role in our ecosystem. Bring a mason jar with holes punched, or borrow one of ours. Catch and release.

**8pm | Member: \$5, Non-Member: \$10 | All Ages**



## SAT **Tree-torials**

**JUL**  
**16**

**Saturday, July 16 - Species Tour**

**Saturday, October 1 - Foliage Tour**

Frederic Church planted thousands of trees while living at Olana. Join us on July 16th to learn all about these native and exotic specimen trees on a walk through our winding carriage roads. On October 1st learn about why leaves change color.

**3-5pm | Member: \$15, Non-Member: \$20 | Ages 5+**



Figure 1

**WED**  
**AUG**  
**03**



## **21st Century Damsels & Dragons**

Join Larry Federman for a fun-filled outing with dragonflies and damselflies. Larry will present an introduction to these creatures, dispel some myths, and give an overview of the New York State Dragonfly and Damselfly Survey. We will then attempt to catch these beautiful insects - catching them is as much sport as it is science! With speeds recorded at 30 mph catching the little critters can be very challenging; an expert will demonstrate.

**10am-12pm | Member: Free, Non-Member: \$5 | All Ages**

S A T  
JUN  
18



Figure 2

### Navigation Series: Mapping Church's Travel Routes

Do you ever wonder how people traveled in the 19th century without the luxury of Google Maps? We will learn how people traveled and navigated the seas by looking at the places where Frederic Church traveled to during his lifetime. Learn about 19th century travel and exploration with environmental educator, Fran Martino, as we look at historic maps and learn how to use compasses, maps, and GPS systems.

**3-5pm | Member: \$15, Non-Member: \$20 | Ages 5+**

S A T  
AUG  
06

### The Big Melt

What would life be like without electricity and a refrigerator? How would we ever have a cool glass of lemonade or water in the summertime? Beat the heat and learn about 19th century ice harvesting with environmental educator, Fran Martino. Ice cream is included!

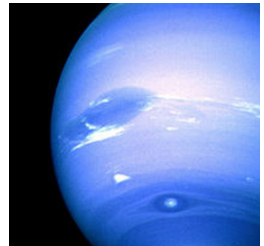
**3-5pm | Member: \$10, Non-Member: \$15 | All Ages**

S A T  
SEP  
03

### Skyscape Series: Neptune at Opposition

Join Dr. Willie Yee, President, and Joe Macagne, Vice President of the Mid-Hudson Astronomical Association for a presentation and 21st Century exploration of the night sky at Olana. Come learn about the sky by looking through telescopes and finding celestial forms.

**8pm | Member: \$5, Non-Member: \$10 | Ages 5+**



S A T  
SEP  
24

### Geology Hike

Join Hartwick College Geology Professor, Robert Titus, on Olana's East Lawn, to learn about the geological history of Olana. The hike will also explore the natural forces that shaped Frederic Church's artist-designed landscape. With Titus as your guide, science meets storytelling. We will hike about 1.5 miles followed by healthy seasonal snacks.

**3-5pm | Member: Free, Non-Member: \$5 | Ages 5+**



© Robert Goldwitz

S A T  
OCT  
29

### Owleen Hike

Listen to a brief talk about owls. Meet a live owl and raptors. Head out on the carriage roads to hear hoots and try to spot an owl.

**7pm | Member: Free, Non-Member: \$5 | All Ages**



# JOIN

## MEMBERSHIP MATTERS

Members of The Olana Partnership make possible our many educational programs, annual exhibitions, and ongoing restoration and preservation efforts in the house and landscape.

### Members receive:

- Free tours of the house and landscape
- Discounts to programs and events
- Special invitations to member only events
- 15% discount in The Olana Museum Store
- And more...

**Sign up today at:** [www.olana.org/support](http://www.olana.org/support).

Membership card required to receive discounts.



# VOLUNTEER

Without the time and various talents of Olana's volunteers many projects and activities would be impossible. We have opportunities for volunteers in many areas including the main house, Museum Store, landscape, events, education programs and office.

To learn more email [mhasbrook@olana.org](mailto:mhasbrook@olana.org).

**THE OLANA MUSEUM STORE**  
VINTAGE • HAND MADE • UNIQUE

Visit today or shop online at  
[www.olana.org/museum-store](http://www.olana.org/museum-store)

**MEMBERS RECEIVE 15% OFF**

**May-October**  
Tuesday-Sunday, 10am-5pm

**November-April**  
Friday-Sunday, 10am-4pm

**THE OLANA**  
MUSEUM STORE



# HEALTH + WELLNESS

SAT  
JUL  
30

## Breathwalk

Breathwalk is the science of combining specific patterns of breathing synchronized with your walking steps and enhanced with the art of directed, mindful attention. A combination of focusing on breath, mantra and mudra allows the mind to go into moving meditative state. It is simple, natural, and effective. Enjoy a guided breathwalk led by Nidhi Huba, owner of Aum Home and yoga and spiritual healing professional for over 20 years. This is the perfect way to beat the summer heat and to learn about how to walk while noticing your surroundings, finding peace, and breathing in a more conscientious way.

**3pm | Member: \$5, Non-Member: \$10 | Ages 8+**



SUN  
SEP  
04

## All Dogs Day Hike

Join dog enthusiast Fran Martino and her dog Loki for a dog themed hike and information sharing dedicated to our favorite furry friends. For everyone's safety, dogs must be on a leash at all times.

**12pm | Member: \$5, Non-Member: \$10 | All ages**



Figure 3

SUN  
SEP  
11

## Barry Hopkins Run

Spend the morning on this 3.8-mile course traversing the historic carriage roads at Frederic Church's Olana. This event is a collaboration with the Onteora Running Club and supports arts education in the Catskill School District. Please register online or on race day. Rain or shine. Free t-shirt to the first 75 people who register.

**Registration Opens 8:30am | Children's Run 9am | Adult Run 9:30am  
Member: \$15, Non-Member: \$20 | All ages**



W E D  
NOV  
23

## Holiday Gobble Hike

Take a break from cooking to join us on a moonlit hike the evening before Thanksgiving and learn all about the bird at the center of this holiday. Our environmental educator, Fran Martino, will guide us on the carriage roads and teach us all things turkey including how to call wild turkeys.

**6pm | Member: \$10, Non-Member: \$15, Family: \$25 | All ages**

## Pathways to Prevention: Talk + Hike with a Doctor

The Olana Partnership partners with Columbia Memorial Health to encourage thinking of Olana as a place to enhance your mental and physical health. This series also links to NYS Parks priorities to encourage healthy outdoor recreation. Participants will experience a 15 minute talk in the Wagon House Education Center, and then hike and seek advice from experts on Olana's carriage roads.

5:30-7pm | Free | All Ages | Rain or shine

TUE  
JUN  
21



### Women's Minimally Invasive Surgery with Dr. Edward Marici

CMH surgeon Dr. Edward Marci, D.O. is among the region's most experienced and accomplished specialists in women's minimally invasive surgery and offers a comprehensive and holistic approach to internal and gynecological treatment options.

TUE  
JUL  
19



### Breathe Easier with Pulmonologist Dr. Mehjabin Zahir

CMH Pulmonologist Dr. Mehjabin Zahir, M.D. will discuss common respiratory issues including C.O.P.D., asthma and treatment options. Dr. Zahir is part of a team of doctors at Columbia Memorial Pulmonology and is board certified in internal medicine, pulmonary disease and critical care.

TUE  
AUG  
30



### Tips for Staying Heart Healthy from Cardiologist Dr. Louis Clinton

Join CMH Cardiologist Dr. Louis Clinton, M.D. as he discusses the basics of good cardiovascular health and treatment options for men and women age 35 and up.

TUE  
SEP  
20



### Expert Advice From The Spine Institute

Join CMH's Dr. Ersno Eromo, M.D. as he talks about clinical assessments and treatments for all patients with spine problems and offers surgical and non-surgical treatment options. He works closely with pain management expert Dr. Ronny Kaflluiddi, M.D. at The Spine Institute at CMH to tailor treatment plans for patients.

TUE  
OCT  
18



### Tips for Making Healthy Seasonal Meals from a Nutritionist & Dietitian

Discover seasonal superfoods that taste great and boost your immune system just as the cooler weather sets in. Join CMH clinical dietitian and nutritionist Sarah Thomsen-Ferreira, MS, RD, CDN, CNSC for a fun and educational presentation.

# SUMMER SERIES

## Panorama: Summer Programs for Youth

M- F | 9-3pm | Admission: \$210 per week | Ages 6-13

### Week One | July 11-15

#### Panorama: Sci-Arts for Inventors Wagon House Education Center

Calling young artists! Youth will explore methods of making art through the prism of Frederic E. Church's art, and the natural resources found within his designed landscape. Stretch your imagination and be inspired to create original scientific art projects through a variety of media focused on these themes. Space is limited to 25.



### Week Two | July 18-22

#### Panorama: Environ-Science for Discoverers Wagon House Education Center

The Olana Partnership works with the Taconic Outdoor Education Center to bring you this camp for aspiring scientists and explorers. Frederic E. Church loved natural history, nature, and ecology. This camp will be led by seasoned environmental educators who have a number of fun-filled experiments and expeditions planned inside Olana's 250 acres; this camp is place-based learning, with a whole lot of play and completely new activities never before discovered at Olana. Space is limited to 25.



### **SOLD OUT!** Week Three | July 25-29

#### Panorama: Time Travel for Historians Wagon House Education Center

Rifts off time travel movies and novels to create a playful synthesis with Olana's history. Youth will arrive each morning and find themselves thrown back in time to a particular decade that they have to figure out through a series of clues and challenges. Teams of students will compete for the Time Travel Trophy each day. Church loved to travel the world and this camp is all in the spirit of developing a love for change and new experiences, while also trying to figure out how we understand history today. Space is limited to 25.







## **FREE!** Live in the Landscape: Astronomy, Music and Film Nights

Join us for a free family evening at Olana; pack a cooler with snacks and drinks, bring blankets and chairs and join us on the East Lawn for live music, sunset and star-gazing, and outdoor all-audience films! **Saturday rain dates** (please check online)

**F R I**  
**JUN**  
**24**

6pm - Ilusha Tsinazde & Company  
8pm - Bill and Ted's Excellent Adventure  
10:30pm - Eat, Pray, Love  
Star-gaze with Mid-Hudson Astronomical Association



**F R I**  
**JUL**  
**29**

6pm - Bard College Conservatory Students  
8pm - Home  
10:30pm - Art House  
Star-gaze with Albany Area Amateur Astronomers



**F R I**  
**AUG**  
**26**

6pm - 77th Regimental Balladeers  
8pm - Night at the Museum  
10:30pm - 180 Degrees South  
Star-gaze with Mid-Hudson Astronomical Association



# EXHIBITIONS + SPECIAL LECTURES



Figure 4. Frederic E. Church, *Mount Chimborazo at Sunset* (detail), 1857, oil on academy board, NYSOPRHP

## MAY Capturing the Cosmos

TO  
OCT

*Capturing the Cosmos*, the 2016 exhibition in the Sharp Family Gallery, explores the influence of the great German Naturalist Alexander von Humboldt on Frederic Church. Acclaimed and revered during his own lifetime, Humboldt is currently enjoying a renaissance due to the recent award-winning bio *The Invention of Nature* by Andrea Wulf. Humboldt's writings inspired Church's South American adventures and the resulting masterpieces that made him internationally famous, and informed Church's later trips to the Bavarian Lakes and Mexico. Sketches, diaries and artifacts from these trips trace Church's daring escapades to capture Humboldt's *Cosmos*.

**Member Opening + Reception: May 14, 4pm | Public Opening: May 15**

## S A T Art and Ecology at Olana: Illustrated Lecture and Book OCT Signing by Jennifer Raab, Ph.D

15

In designing his estate, Frederic Church turned to the physical environment, a move that allowed the artist to rethink scale and process while engaging with pressing ecological questions. Drawing from her new book, *Frederic Church: The Art and Science of Detail*, Jennifer Raab, Ph.D from Yale University, will offer a new understanding of this canonical American artist and his home.

**3-5pm | Member: \$10, Non-Member: \$15 | Ages 12+**

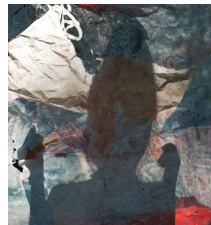
**SPECIAL! Twilight Tour of *Capturing the Cosmos* with Dr. Raab + Curators**  
**5pm | Member: \$40, Non-Member: \$60**

## JUN Mystery Box: Student Artists at Work

TO  
JUL

The Coachman's House Gallery has been transformed into an experimental workspace for selected Bard College MFA and undergraduate students to experiment with research-based art-making practices at Olana. These students will be available for questions and conversations throughout the weekends, and visitors can watch their artwork develop over time.

**Closing Reception: July 30, 3-5pm**



## JUN Wayfinding: Imaging History with (Our)story

TO  
DEC

*A Community Engagement Art Project by Dawn Breeze*

This project is a socially engaged artwork attempting to bridge ancient history with the 21st century. Through encouraging mass visitor artistry as individuals use their cell phones, tablets, and computers to upload their unique experiences with the natural environment at Olana. This project creates a participatory online gallery based on Olana's geography. It is our hope that this visitor exhibit will provide a key and map to time and place, and where we have come from in relationship to landscapes and each other.

**Opening Reception with Plein Air Celebration: October 8, 5-7pm**







**AUG**  
**TO**  
**OCT**

**Follies, Function & Form: Imagining Olana’s Summer House**

The historic 1886 *Plan of Olana* is largely accurate, yet it contains one mystery: a structure labelled “Summer House”. Summer houses were common in early American gardens and public landscapes, yet there is no documentary evidence about the style or form of this structure at Olana. Designers will present summer house concept sketches in response to Olana. This exhibition is organized by The Olana Partnership, in collaboration with the New York Chapters of The American Institute of Architects (AIANY) and the American Society of Landscape Architects (ASLA-NY).

**Members Opening + Reception: August 13, 4pm | Public Opening: August 14**

**S A T**  
**NOV**  
**05**

**The Encyclopedia of the American Summer House with Therese O’Malley, Ph.D**

Join Dr. Therese O’Malley, Associate Dean at the Center for Advanced Study in the Visual Arts at the National Gallery of Art in Washington, to learn more the history of the American landscape architecture forms known as the summer house in the 19th century. This lecture will provide one last chance to explore the Summer House Exhibition in the Coachman’s House Gallery and give you lots to consider for your own garden planning over the winter.

**3-5pm | Member: \$10, Non-Member: \$15 | Ages 12+**



© Dan Region

**F R I**  
**OCT**  
**07**

**TO**

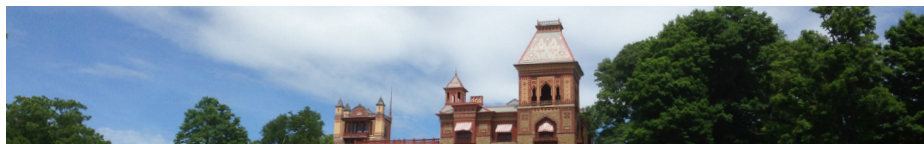
**S U N**  
**OCT**  
**09**

**COLUMBUS DAY WEEKEND! 5th Annual Plein Air Celebration**

Join us for Olana’s Fifth Annual Plein Air Celebration in collaboration with Columbia County Council of the Arts. Interact with competitively selected artists on Friday-Saturday in Olana’s artist-designed landscape. Join us Saturday night for a free meet the artist reception, impromptu exhibition, and artist awards along with the opening of *Wayfinding: Imagining History with (Our)story*. The event concludes with a tent sale in downtown Hudson on Sunday from 11am-8pm. Over the weekend Olana will also offer a number of participatory programs to encourage painting outdoors, landscape tours, and viewing artists at work. Proceeds support education programs at Olana and the Columbia County Council on the Arts. This event is free and open to all ages.

**Reception: October 8, 4-6pm**

# PLAN TO TOUR OLANA



## The Main House

Admission to the house by ticket only. Guided and self-guided options are available. Advance reservations are strongly encouraged at [www.olana.org/book-a-tour](http://www.olana.org/book-a-tour)  
For same day reservations, call NYS Office 518-828-0135 or stop in the Visitor Center.

### May 14-October 30

#### GUIDED TOURS - main + second floor

Tues- Fri, 10am-5pm, last tour starts at 4pm  
Sat-Sun, 10am-2pm, last tour starts at 1pm

#### SELF-GUIDED - main + second floor

Sat-Sun, 2-4pm, last entry at 3:30pm

#### PRICE

Adult: \$12  
Senior (62+): \$10  
Students with valid ID: \$10  
Children under 12: Free  
Member of The Olana Partnership: Free

### November 1-December 31

#### GUIDED TOURS - main floor only

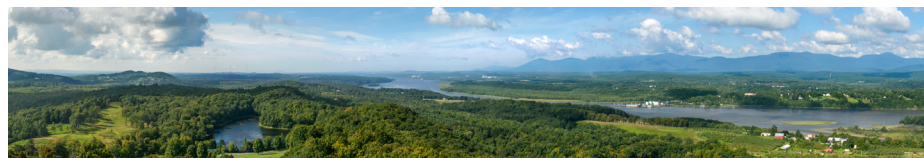
Friday-Sunday, 11am-4pm, last tour starts at 3pm

#### PRICE

Adult: \$9  
Senior (62+): \$8  
Students with valid ID: \$8  
Children under 12: Free  
Member of The Olana Partnership: Free

#### Large Group House Tours

All groups of 10 or more people are considered a large group tour and are required to make advance registrations. Please submit your application on [www.olana.org/book-a-tour](http://www.olana.org/book-a-tour)



© Beth Schneck

## NEW! Historic Landscape Tours

All landscape tours meet and begin outside the Visitor Center and Museum Store. Advance reservations are strongly encouraged at [www.olana.org/book-a-tour](http://www.olana.org/book-a-tour)  
Walk-ins are welcome to join 15 minutes before a tour start time, however not guaranteed.

### Electric Vehicle Tour

#### Guided tour of 5 miles of carriage roads

Friday and Sunday, 11:15am + 2:15pm

#### PRICE

Adult: \$25  
Senior (62+): \$25  
Students with valid ID: \$25  
Member of The Olana Partnership: \$25  
Due to safety reasons, children under the age of 8 are prohibited.

### Walking Tour

#### Guided tour of 1.5 miles of carriage roads

Tuesday and Saturday, 11:15am + 2:15pm

#### PRICE

Adult: \$12  
Senior (62+): \$10  
Students with valid ID: \$10  
Children under 12: Free  
Member of The Olana Partnership: Free

### Digital Landscape Tour

Covers approximately 1 mile of carriage road

PRICE - \$5 minimum

Search for "Olana" in your mobile app store. Cost includes a map at Visitor Center.



## School Field Trips + Youth Day Trips

To book a field trip call the Education Department, 518-828-1872 x 105

**Student: \$10 for house tour + full day activity**

**Bus grants available**

### **Land as a Canvas: Voices from the Land**

Frederic Church considered Olana (the house and the landscape) his greatest work of art. In this ½ day field trip, students will visit one room inside, tour the building exterior, and enjoy a short hike in the landscape. After exploring, students will make art from found materials in Olana's landscape. This project originates from the Education & Information Resource Center and is designed to turn simple materials, like sticks and leaves, into art supplies, encouraging students to invent in nature.

### **Weather & Clouds: Real and Representational**

Frederic E. Church was interested in the art of nature and the art of science. During this full day visit students will begin by touring parts of the house in order to study Frederic Church's paintings and drawings of clouds and weather. Then, students will hike on Olana's carriage roads making their own observations, ending in the Wagon House Education Center for more hands-on study and art-making.

### **The Art of 2D to 3D and Back Again: Art, Land, and Architecture**

Frederic E. Church spent his career turning three dimensional views into two dimensional paintings; and sketches and architectural drafts into buildings and landscapes. How does one translate between 2D and 3D? During this day-long visit, students will begin by touring parts of the house in order to study specific relationships between art, design, and architecture. Then students will hike on the carriage roads making observations in each setting, ending in the Wagon House Education Center to turn a Church sketch into a three-dimensional paper model.

### **Islamic Design: Persian Influence and Geometry at Olana**

Frederic E. Church and his family travelled extensively in the Middle East in the 1860s. His home, Olana, was designed and built just after this trip—so the Hudson River Region boasts a rare glimpse into designs of ancient Persia! During this day-long visit students will tour Olana; then, with sketchbooks in hand, students will hike and sketch geometric designs that combine nature and geometry. Students will spend the afternoon in the Wagon House Education Center working with drafting tools/rules and Persian design examples (as well as their sketch books) to create original compositions and repeating forms.

### **From Sketch to Study to Painting: Studying F.E. Church's Method**

Frederic E. Church created dozens of studies and sketches outside in the landscape before creating his masterpiece canvases inside. Students will tour Olana, hike the landscape, and study Church's en plein air art. During this day-long visit, students will take notebooks and drawing boards into the landscape to make art and notations in the style of Church. Then they will choose their favorite drawing and make a study from the sketch. Groups are encouraged to take their en plein air studies and sketches home to continue painting.



THE OLANA SUMMER PARTY

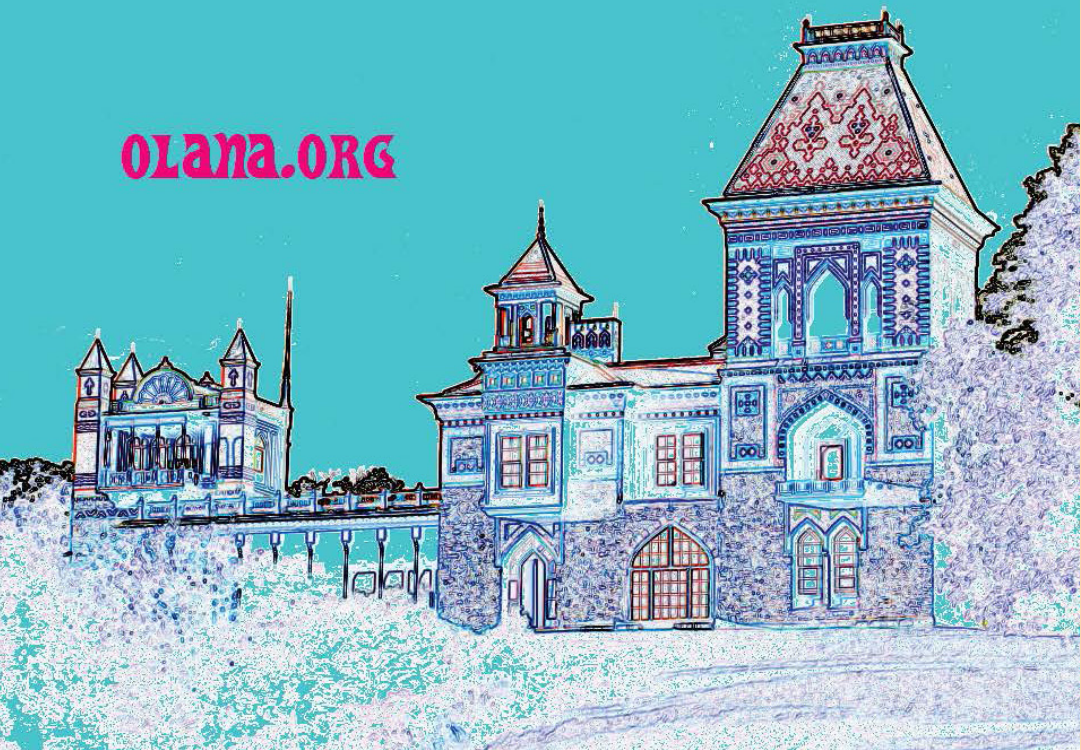
OLANA '66

SATURDAY

JULY 9

2016

[OLANA.ORG](http://OLANA.ORG)



# ABOUT OLANA



© Andy Wainwright

## About Olana State Historic Site and The Olana Partnership

Olana is the greatest masterpiece of Frederic Edwin Church (1826-1900), the preeminent American artist of the mid-19th century and one of the most important artist's homes, studios and designed landscapes in the United States.

Church designed Olana as a holistic environment integrating his advanced ideas about art, architecture, landscape design, and environmental conservation. Olana's 250-acre artist designed landscape with a Persian inspired house at its summit embraces unrivaled panoramic views of the Hudson Valley and Catskill Mountains and, today, welcomes more than 150,000 visitors annually.

Olana State Historic Site, a historic site administered by the New York State Office of Parks, Recreation and Historic Preservation, Taconic Region, is a designated National Historic Landmark and one of the most visited sites in the state.

The Olana Partnership, a private not-for-profit education corporation, works cooperatively with New York State to support the restoration, conservation, and interpretation of Olana State Historic Site. In 2016, we mark the 50th Anniversary of Olana being saved from destruction.

To learn more about Olana State Historic Site and The Olana Partnership, please visit [www.olana.org](http://www.olana.org).

## PHOTO CREDITS

Unless otherwise noted all images are Collection Olana State Historic Site, NYS Office of Parks, Recreation and Historic Preservation

Figure 1. Frederic E. Church, *Maple Tree, Catskill* (detail), 1845, oil on pine panel, OL.1980.1876

Figure 2. Frederic J. Church, *Plan of Olana* (detail), 1886, watercolor on paper, OL.1984.39

Figure 3. Unidentified photographer, *One of the Church Family Dogs on the Lawn at Olana*, c. 1885-1914, photograph, OL.1986.378.4B

Figure 4. Frederic E. Church, *Mount Chimborazo at Sunset* (detail), 1857, oil on academy board, OL.1980.1884

Cover image, Carri Manchester; Page 2 - Plan Your Visit photo credit Elizabeth Schanz; Page 3 - Sunset Carriage Tours photo credit Rachel Tice, Tasty History Series photo credit to Sarah Hasbrook, Preserving Olana photo credit Melanie Hasbrook; Page 4 - Artful Hike Church's Letters photo credit Alon Koppel, Artful Hike Poets Walk photo credit Sam Truitt; Page 5 - Miniature Theater photo credit Dion Robbins Zust, Holiday Greens photo credit Elizabeth Schanz; Page 6 - Firefly Hike photo credit Elizabeth Schanz, 21st Century Damsels and Dragons photo credit Elizabeth Schanz; Page 7 - Geology Hike photo credit Robert Goldwitz; Page 10 - Barry Hopkins Run photo credit Amy Hufnagel, Breathwalk photo credit Nidhi Huba; Page 11 - Pathways to Prevention photo credits Columbia Memorial Health; Page 12 - Panorama Week 1 photo credit Amy Hufnagel, Panorama Week 2 photo credit Elizabeth Schanz, Panorama Week 3 photo credit Amy Hufnagel; Page 13 - Live in Landscape photo credit Elizabeth Schanz, Ilisha Tsinazde photo credit Tim Tsinazde, Bard College Conservatory photo credit Bard College, 77th Regimental Balladeers photo credit Rob Gibson; Page 14 - Mystery Box photo credit Jessica Chappe, Wayfinding photo credit Dawn Breeze; Page 15 - Artist Jim Cramer painting the spectacular view at Olana photo credit Dan Region, Used by Permission; Page 16 - House Tours photo credit Melanie Hasbrook, Landscape Tours photo credit Beth Schneck; Page 17 - Field Trips photo credit Elizabeth Schanz; Page 19 - Architectural shot photo credit Andy Wainwright, Page 20 - Historic Landscape Tours photo credit Todd Poteet.

Many thanks **Pro-Printers**, our hometown printer, for making us look good at 59 Fairview Ave. Hudson, New York 12534.

Printed locally with soy inks on recycled papers.





Olana  
Partnership  
P.O. Box 199  
Hudson, NY 12534



© Todd Poteet

**NEW! Historic Landscape Tours**

Starting in May 20, 2016, The Olana Partnership will offer regular public tours of Olana's 250-acre landscape in addition to the tour of the main house. Now, in Olana's 50th Anniversary year, visitors will have the opportunity to experience first-hand the full breadth of Frederic Church's vision for Olana on hour-long tours by foot and electric vehicle. See page 16.

[www.olana.org](http://www.olana.org) | 518 828 1872



NEW YORK  
STATE  
COMMISSION ON  
Parks, Recreation  
and Historic Preservation



NON-PROFIT ORG  
U.S. POSTAGE PAID  
C R S T . N E T  
1 2 5 5 0